

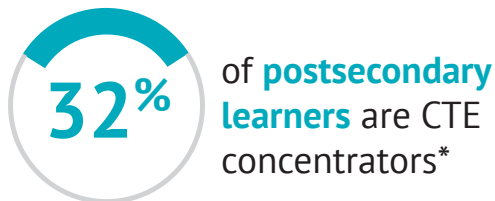
CTE Works for Learners

*Preparing Students
for Today's Careers*

WEST DAKOTA

Career Technical Education (CTE) gives learners the opportunity to explore careers and acquire real-world skills while learning the academic content they need for their future. It also provides employers a skilled workforce to meet the demand for job openings, helping businesses and communities thrive.

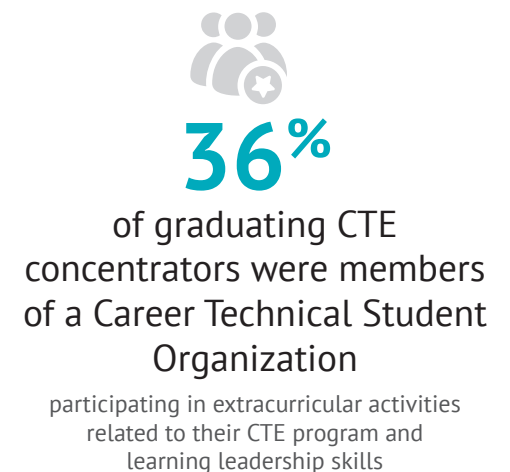
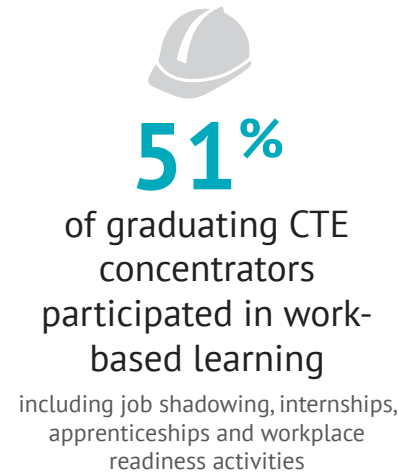
Many learners in our state
participate in CTE.



add photo here

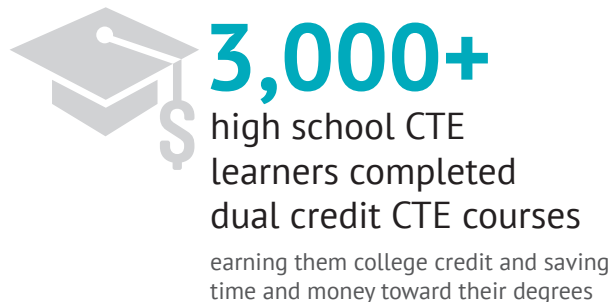
*Secondary CTE concentrators have completed at least two courses in a single CTE program. Postsecondary concentrators have completed at least 12 credits in a CTE program or completed a program that encompasses fewer than 12 credits.

CTE helps middle and high school learners explore careers
and gain real-world experience.



See [website.org](#) for more details about available CTE programs, work-based learning and Career Technical Student Organizations.

CTE also helps high school learners get an early start
on college and careers.



All data are from the 2018–19 school year unless otherwise noted.

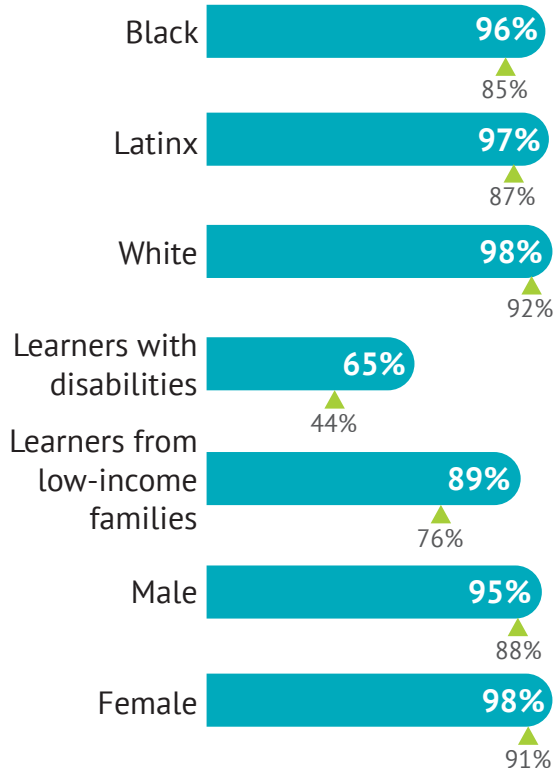
CTE learners graduate high school at higher rates.

97% of CTE concentrators graduate in 4 years

State average, all learners: 89%

By learner group

▲ State average



CTE learners go on to succeed.

AFTER HIGH SCHOOL GRADUATION:



76% of CTE concentrators were enrolled in some form of postsecondary education

48% four-year college
28% two-year college

State average, all learners: 54%



9% were employed



3% were in the military

AFTER POSTSECONDARY PROGRAM COMPLETION:



82% of CTE concentrators had earned a credential of value



37% remained enrolled in postsecondary education



76% of postsecondary CTE learners were employed, in advanced training or in the military within 6 months of graduation/program completion

32% were employed • 42% went on to advanced training

"I had a part-time job to help pay the bills and was taking care of my ailing mother. I knew I wanted to work in health care but wasn't sure how to get into the field and what options were available. My advisor recommended CTE. I learned about different health care careers, and the flexible schedule meant I could take the classes I needed when I needed them. Now I work as a nursing assistant at a long-term care facility." —Jose Ramos

To find out more about available CTE programs in your region, go to [website.org](https://www.cte.org).